

Shop » Spine, prese e adattatori » Spine prese americane



## CONNETTORE IEC C14 MASCHIO, 10A, 250VAC SNAP-IN, 2 FUSIBILI 5X20,W

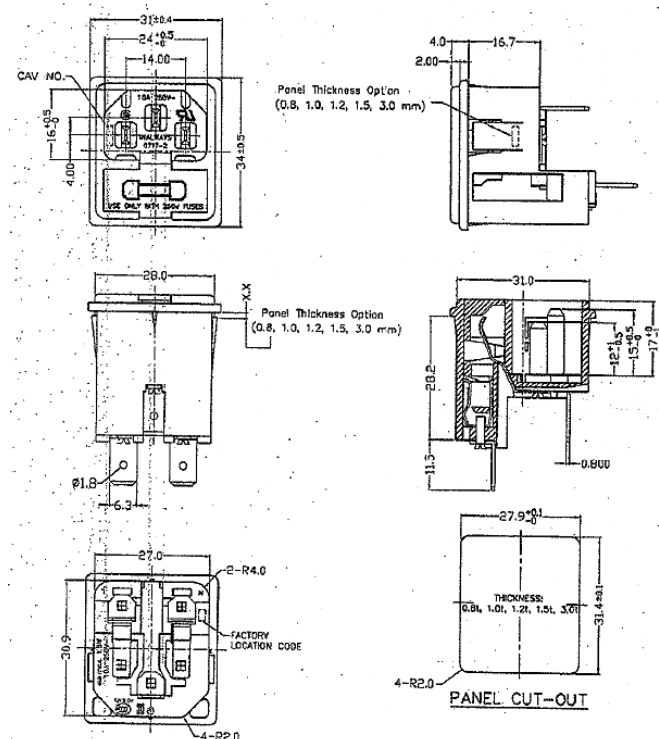
EN60320 C14  
T 70°C  
10A - 250 VAC (UL-CSA-TUV-CCC)  
CORPO: TERMOPLASTICA UL94V-0  
FUSIBILI NON INCLUSI DISPONIBILI NEL CAPITOLO ELETTRONICA SERIE 520

COD: **0278-1-W-XX**

COD PRODUTTORE: **0717-2-P**

MARCA: **INALWAYS**

### DISEGNO



### SPECIFICATION

- A: MATERIAL:**  
1. HOUSING: NYLON 66 FLAMMABILITY, UL 94V-0  
2. TERMINAL: COPPER ALLOY, TIN PLATED
- B: CHARACTERISTICS:**  
1. RATING: 10A 250V~ NORTH AMERICA & EUROPE  
2. INSULATION RESISTANCE: 100 MΩ MIN. AT 500 VDC  
3. ELECTRIC STRENGTH: AC 2,000 V FOR 1 MINUTE
- C: APPROVALS:**  
UL, CSA, TUV, KC & CCC
- D: ORDERING INFORMATION:**

P/N	PANEL THICKNESS
0717-2-PW08	0.8 mm
0717-2-PW10	1.0 mm
0717-2-PW12	1.2 mm
0717-2-PW15	1.5 mm
0717-2-PW30	3.0 mm

### SPECIFICHE

Tensione (V)	Terminali	Modello	Montaggio	Corrente Nominale	Numero fusibili	Dimensione fusibili	Tipologia
250V AC	Faston 6.3	C14	Snap-in	10A	2	5x20mm	Spina