

Shop » filtri antidisturbo emi » filtri monofase

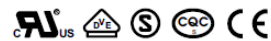


FILTRO 20A 250V AC, MONOFASE SCATOLATO EMI

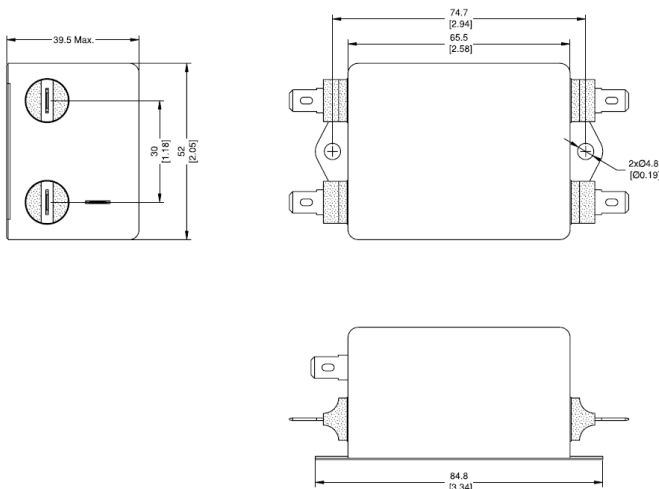
DA 1A A 20A (CUL-VDE-SEMKO-CE-CQC)
TENSIONE 115/250V AC - 50/60HZ
CATEGORIA CLIMATICA: HPF 25/110/21
MASSIMA CORRENTE DI FUGA:
@115VAC 50/60HZ: 2UA
@250VAC 50/60HZ: 5UA
HI-POT L-N: 1450VDC
HI-POT L-G: 2250VDC

COD: **20SS4A-1BC2-R-Q**

MARCA: **HIGH&LOW CORP.**



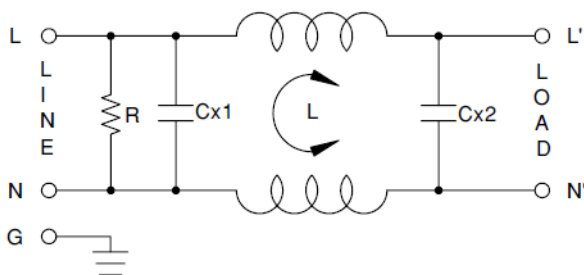
DISEGNO



SPECIFICHE

Tensione	250V AC
Montaggio	a telaio
Modello	1ph
Corrente Nominale	20A
N° di Stadi	1

CIRCUITO



MINIUM INSERTION LOSS IN DB

MHz	0.15	0.5	1	5	10	30
COM.MODE	34	46	52	57	57	53
DIFF.MODE	43	78	79	60	69	81

* ABOVE TABLES ARE REFERENCE ONLY.